

Current and Voltage Transformers



ELECTRUMS

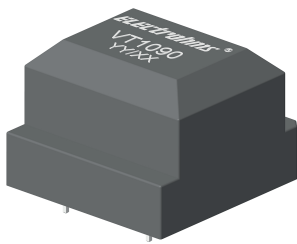


Content

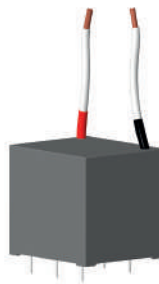
03	About Us
04	Current & Voltage Transformers
05	AC Split Core Current Transformers
06	Mechanical Specification of Product
13	Contact us



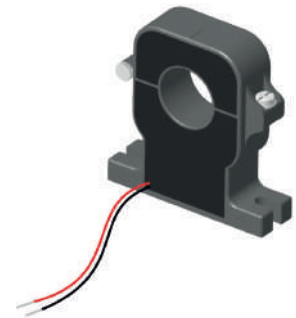
Electrohms is a leading designer and manufacturer of custom magnetics and sensors for measuring current and voltage. With a wide range of standard components and proven custom design capability, we deliver on innovation, quality and service to our customers worldwide. We have over 45 years of experience in serving our customers in critical applications for Industrial, Renewable energy, Automation, EV Charger and IOT markets .



Voltage Transformer



Current transformer



AC Split core current transformer



FAST DEVELOPMENT TIME

Digital tools for rapid prototyping and design and great engineers deliver your projects on time. A full range of standard AC, Pulse and Split core sensor design thoroughly tested are readily available and can be customised to your needs.



PRODUCT QUALITY AND RELIABILITY

Our focus is on delivering unquestionable reliability for customers in a range of extreme operating conditions using a 6-sigma approach. We are ISO 9001 certified and our products are CE marked and UL approved on customer request. We utilise best of class materials, which are UL, approved and ROHS certified.

Current & Voltage Transformers

Current Transformers suitable for Measurement of AC current with galvanic isolation. These current transformer have High accuracy , with low ratio and phase error. Available in different mounting type and various sizes. DC immunity as per IEC62053-21/IS13779. Applications like energy metering, rail, mining, offshore windmills, power control, Ups inverters, compact drive solutions and many more.

Energy metering

High Accuracy Current Transformers for whole current measurements in energy metering .

Product Code	IP(Arms)	Turns Ratio	Rb (Ohms)	DCR(Ohms)	AE (%)	PE(Deg)	Secondary Termination
CT1264-RC	0.01- 5	1:500	85	62-75	0.1	0.2	Fly Lead
CT1265-RC	0.002 - 1	1:500	85	62-75	0.1	0.2	Fly Lead
CT1248-A2-RC	0.05-10	1:1500	75	45-60	0.2	0.5	PCB
CT1052-A1-RC	0.25-20	1:2500	90	120-145	0.5	0.5	PCB
CT1176-RC	0.25-20	1:2500	90	98-120	0.5	0.5	PCB
CT1231-A1	0.25- 30	1:2500	30	132-168	0.3	1	PCB
CT1232-A1	0.25- 30	1:2500	30	132-168	0.3	1	Fly Lead
CT1267-A1-RC	0.25-40	1:2500	30	86-105	0.1	0.25	PCB
CT1316-RC	0.25-40	1:2500	100	108-138	0.1	0.25	PCB
CT1164-A1-RC	0.25-60	1:2500	37.5	62-75	0.1	0.2	PCB
CT1295-RC	0.25-60	1:2500	37.5	62-75	0.1	0.2	Fly Lead
CT1365-RC	0.25-60	1:1000	8.5	11.5 – 14.1	0.1	0.2	PCB
CT1273-A1-RC	1-100	1:2500	7.5	37-47	0.1	0.2	PCB
CT1275-A1-RC	1-100	1:2500	7.5	37-47	0.1	0.2	Fly Lead
CT1332-A1-RC	1- 120	1:2500	6.25	85- 105	0.7	3.5	PCB
CT1216-A1-RC	1-300	1:2500	6.8	21	0.1	0.1	Fly Lead

Protection & Control

Protection and control of industrial equipment like AC drives, UPS/inverters, current monitoring modules and allied equipment require current transformers for sensing currents

Product Code	IP(Arms)	Turns Ratio	Rb (Ohms)	DCR(Ohms)	AE (%)	PE(Deg)	Secondary Termination
CT1202-RC	40	1:1000	100	36 – 46	Fly Lead
CT1270	0.05-5	1:700	10	28	1.5	...	PCB
CT1278	5 – 60	1:4000	390	219-279	<3	...	PCB
CT1337-RC	0.030 - 0.30	1:700	100	16	PCB
CT1292-B1	1- 100	1:1800	25	46	<1.5	<1	Fly Lead
CT1363	5 – 60	1:4000	390	239- 305	3	...	PCB
CT1321	0.25 - 2	1:1000	500	34-42	PCB
CT1333	5 – 120	1:4000	300	162-198	3	...	PCB

AC Split Core Current Transformers

Split Core Current Transformer are designed for fast and easy installation without disconnecting cable or bus- bar circuits. These sensors are compact in size and ideal for installation on existing cable. Applications in energy monitoring, IoT solutions, Industrial automation, etc.

Product Code	IP(Arms)	Temperature	Internal dia	Output Signal	AE (%)	PE(Deg)	Secondary Termination
ST1361-V33310...80	5 to 80A	-10 ... +70° C	09 mm	0 to 0.333V	≤ 1.0 %	...	Fly Lead
ST1369-V333050...200	50 to 200A	-10 ... +70° C	20 mm	0 to 0.333V	≤ 1.0 %	...	Fly Lead
ST1370-V333100...1000	100 to 1000A	-10 ... +70° C	40 mm	0 to 0.333V	≤ 1.0 %	...	Fly Lead
ST1383-V333100...1K5	500 to 1500A	-10 ... +70° C	50 mm	0 to 0.333V	≤ 1.0 %	...	Fly Lead
ST1353-C2005...80	5 to 80	-10 ... +70° C	10 mm	4-20 mA	≤ 2.0 %	...	connector

Voltage Measurement & Isolation transformer

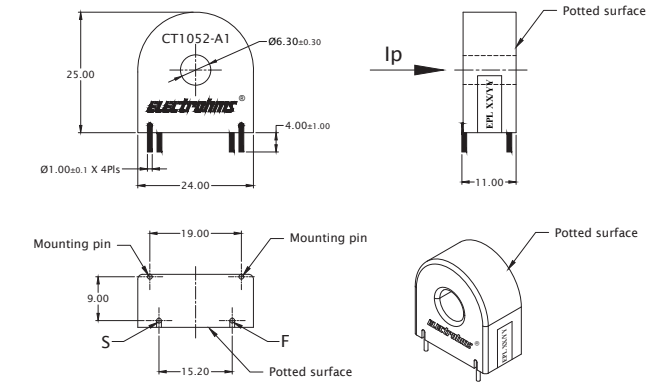
Voltage transformers (VT), also known as potential transformers (PT), are used for metering and protection applications for measurement of AC voltages with galvanic isolation. These transformers are accurate and provide output voltage proportionate to the input voltage for control electronics with high fidelity. They are designed to present negligible load to the source being measured.

Product No	Nominal Input (V _{pn})	Output @V _{pn}	Burden Resistance	Turns Ratio	Dielectric Strength	Temp. Operating	Secondary Termination	Mounting Type
VT1090	110 V _{rms}	4.3 V	2.0 k Ω	1:1	4.0 kV AC	-10 ... +60° C	Pin Terminals	PCB
VT1329	110 V _{rms}	2.3 V	3.3 k Ω	47:1	4.0 kV AC	-10 ... +60° C	Pin Terminals	PCB
VT1342	400 V _{rms}	2.3 V	3.3 k Ω	174:1	4.0 kV AC	-10 ... +60° C	Pin Terminals	PCB

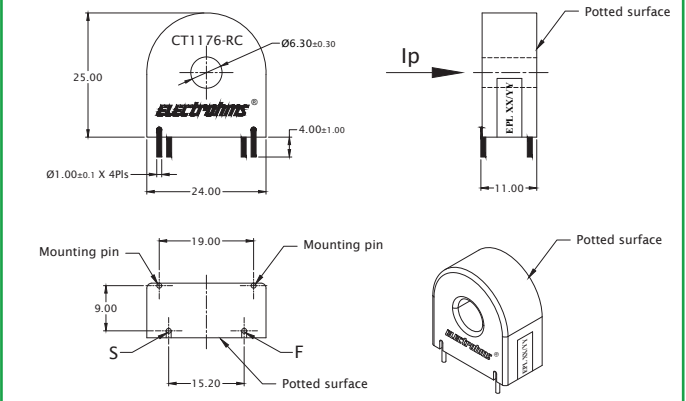
Product No	Frequency	Inductance	DCR	Turns Ratio	Dielectric Strength	Temp. Operating	Secondary Termination	Mounting Type
VT1211-RC	50/60 Hz	18 H	135-165 Ω	1:1	2.5 kV AC	-10 ... +60° C	Pin Terminals	PCB

Mechanical Specification of Product

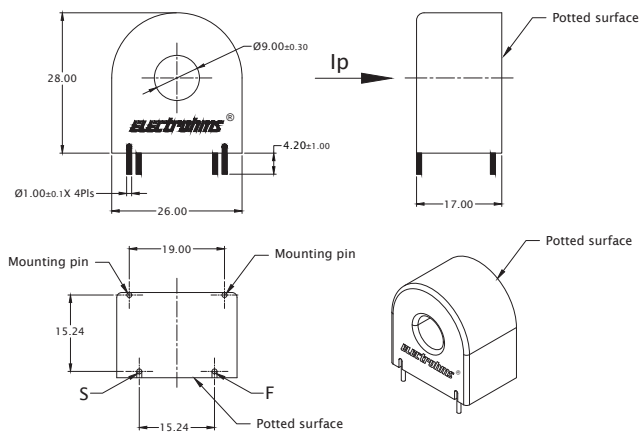
CT 1052-A1-RC



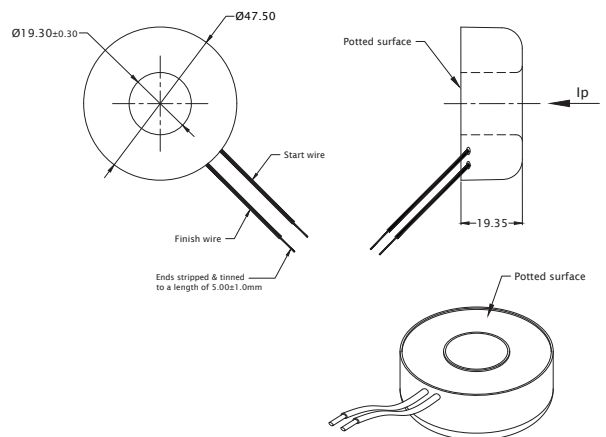
CT1176-RC



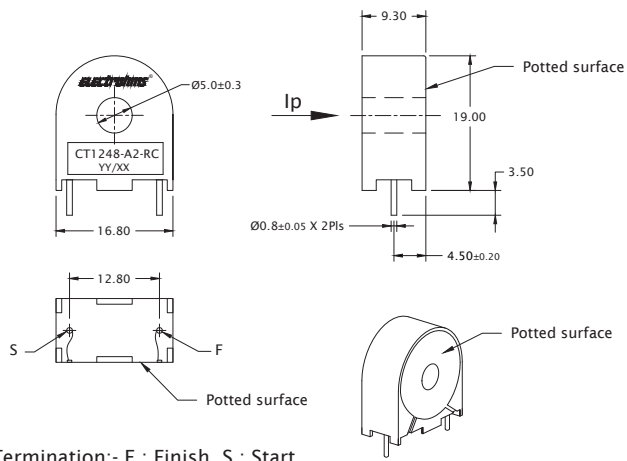
CT1164-A1-RC



CT1216-A1-RC

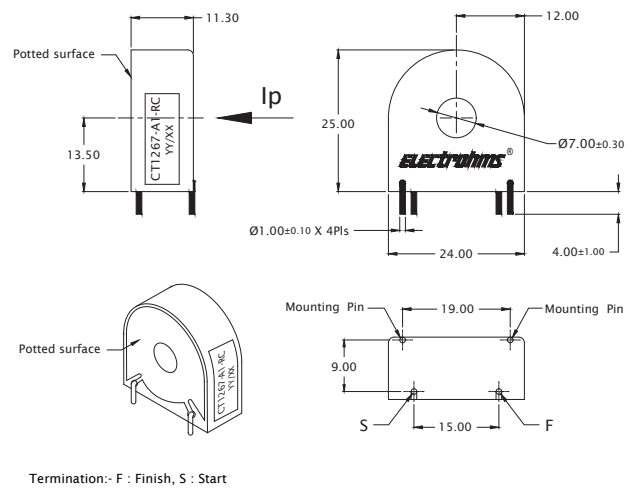


CT1248-A2-RC



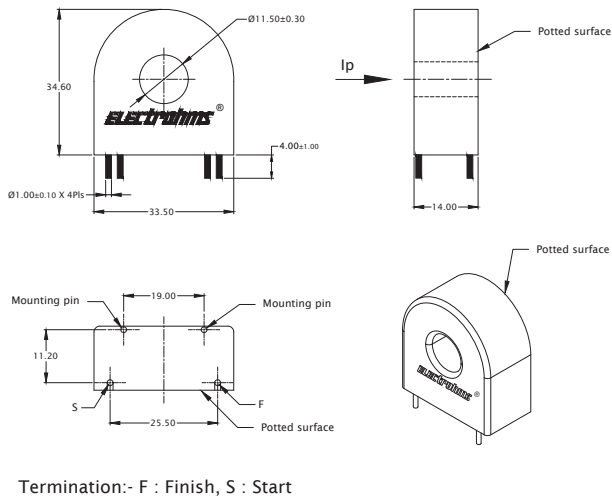
Termination:- F : Finish, S : Start

CT1267-A1-RC



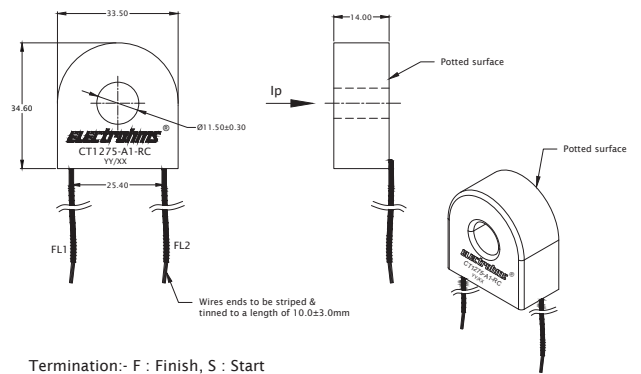
Termination:- F : Finish, S : Start

CT1273-A1-RC



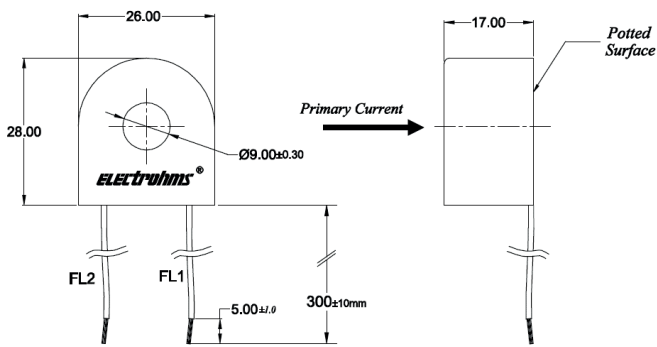
Termination:- F : Finish, S : Start

CT1275-A1-RC

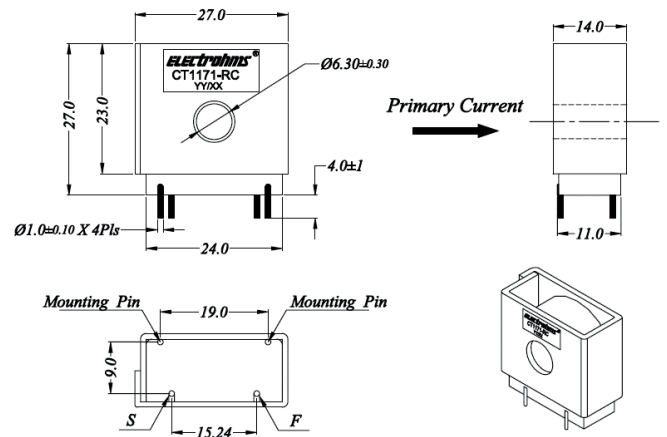


Termination:- F : Finish, S : Start

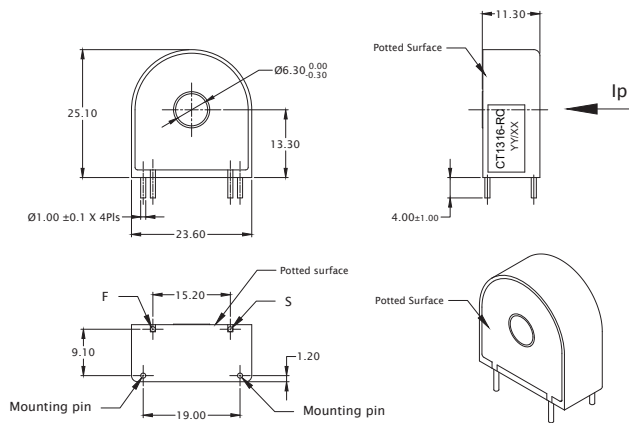
CT1295-RC



CT1171-RC

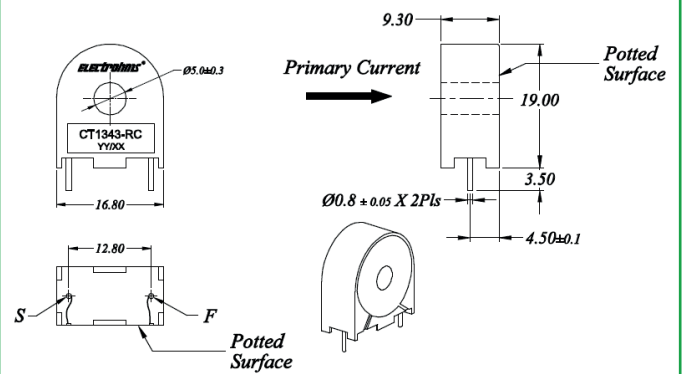


CT1316-RC

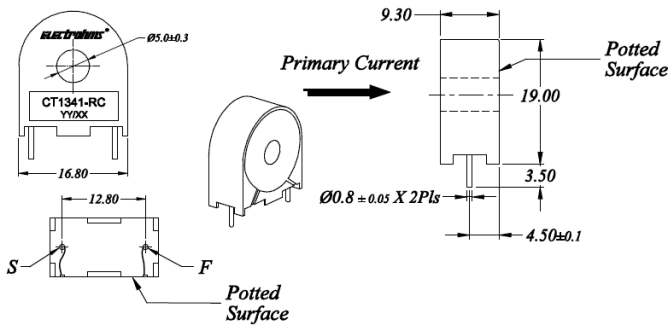


Termination:- F : Finish, S : Start

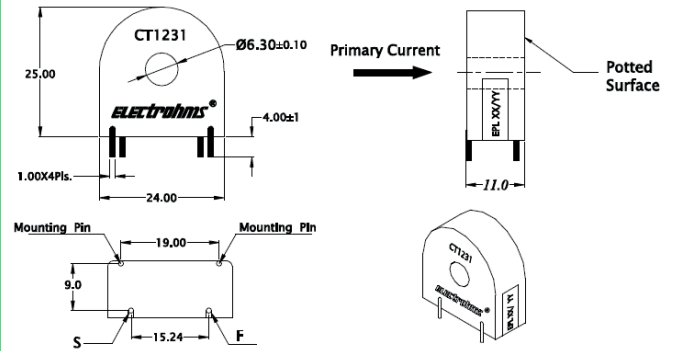
CT1343-RC



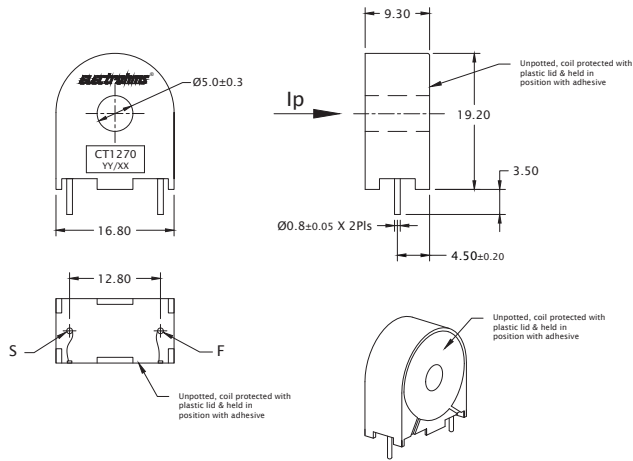
CT1341-RC



CT1231-RC

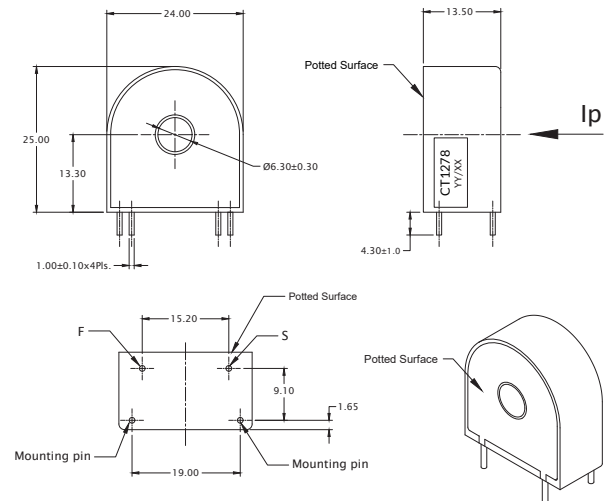


CT1270



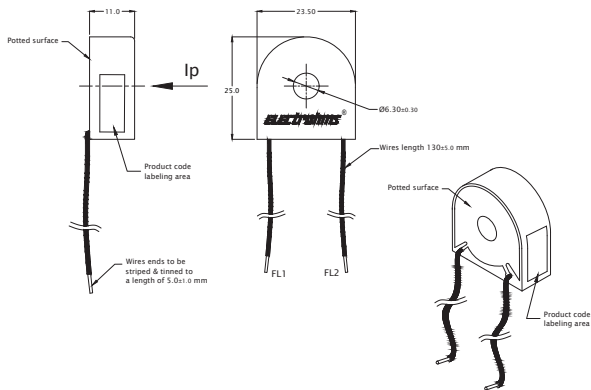
Termination:- F : Finish, S : Start

CT1278



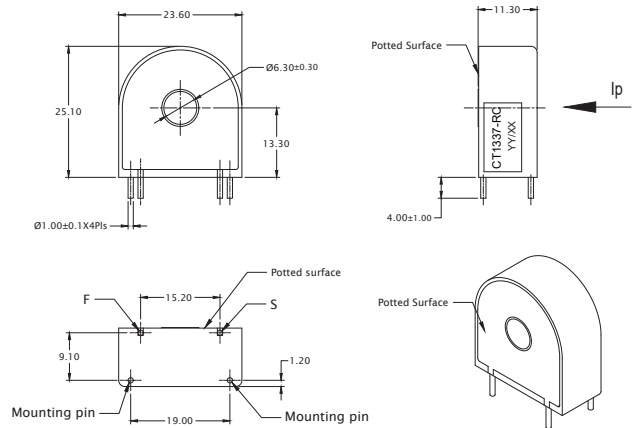
Termination:- F : Finish, S : Start

CT1232



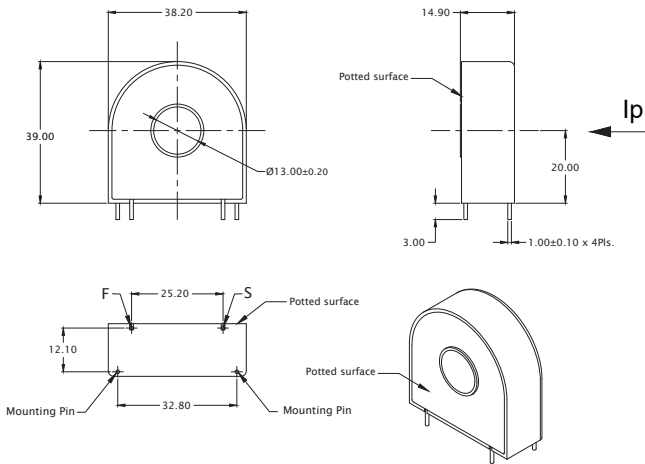
Termination:- FL1-Start: Red, FL2-Finish: Black ,PVC (7.0 X 0.2)mm wire 130.0 ± 5 mm length.

CT1337-RC



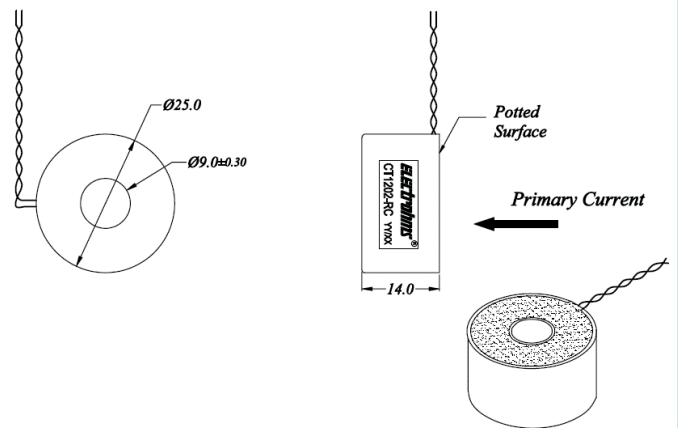
Termination:- F : Finish, S : Start

CT1332-A1-RC

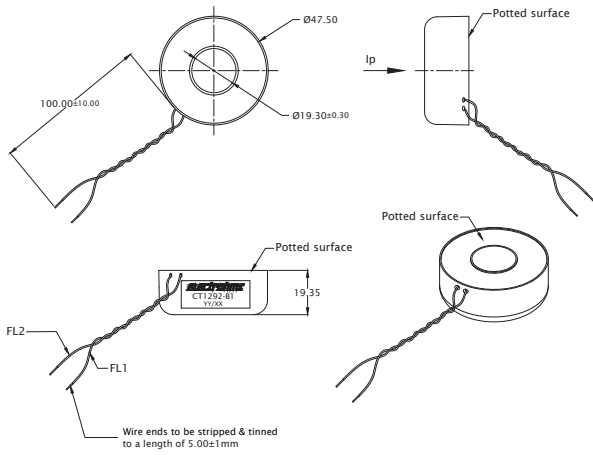


Termination:- F : Finish, S : Start

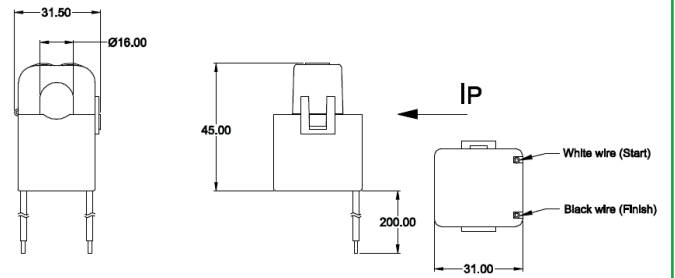
CT1202-RC/CT1202-C1-RC



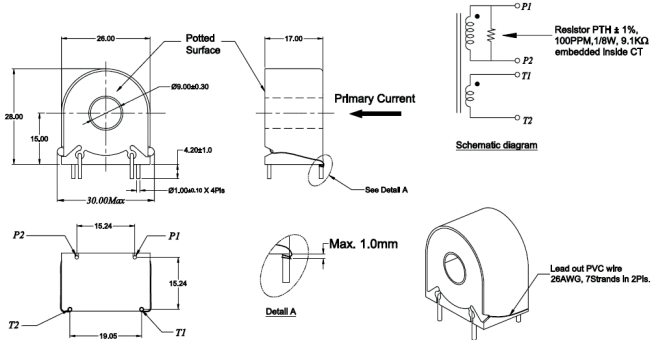
CT1292-B1



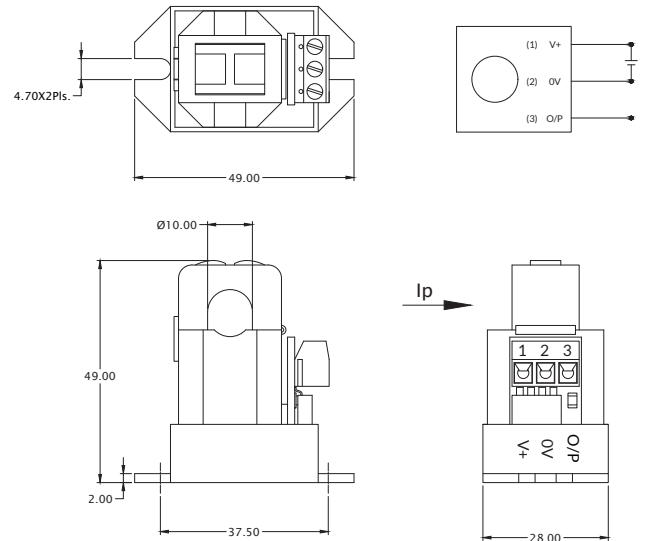
ST1338



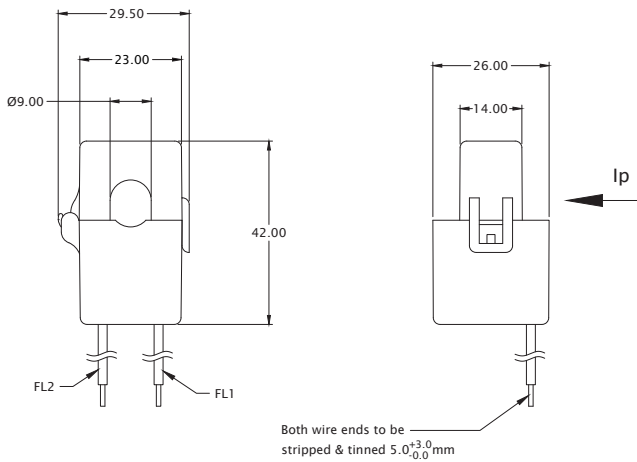
CT1317



ST1353

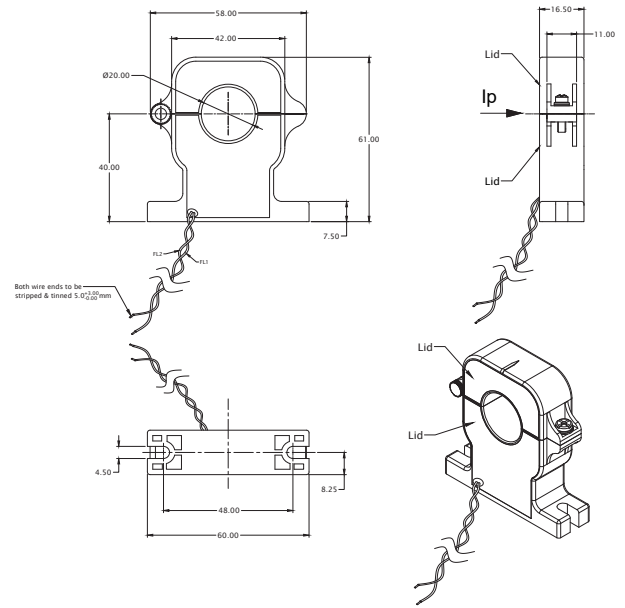


ST1361-V33305...80

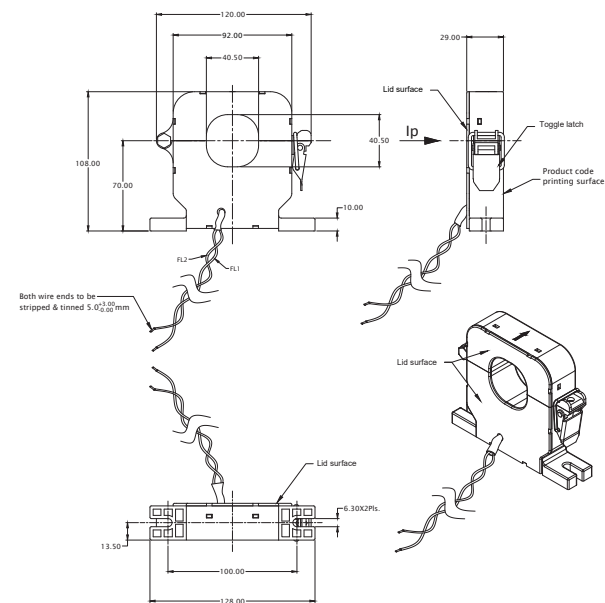


S (Start FL1) : PVC wire 7X0.25mm, 22 AWG, UL1015
 F (Finish FL2) : PVC wire 7X0.25mm, 22 AWG, UL1015

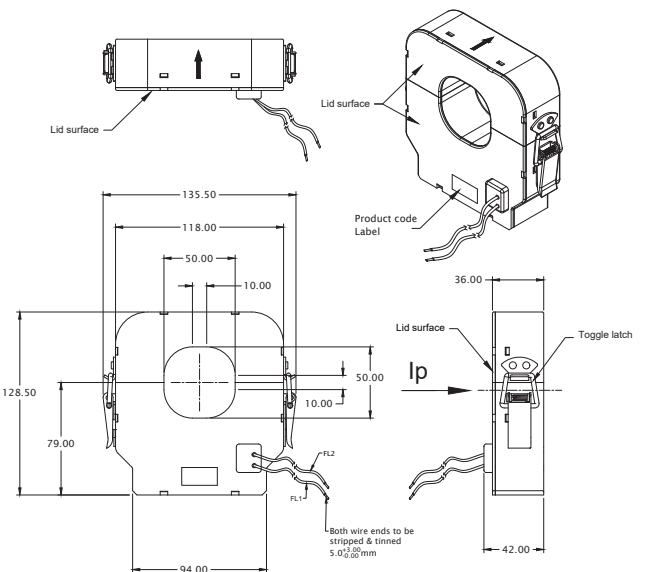
ST1369-V333050...200



ST1370-V333100...1K0



ST1383-V333500...1K5



Electrohms

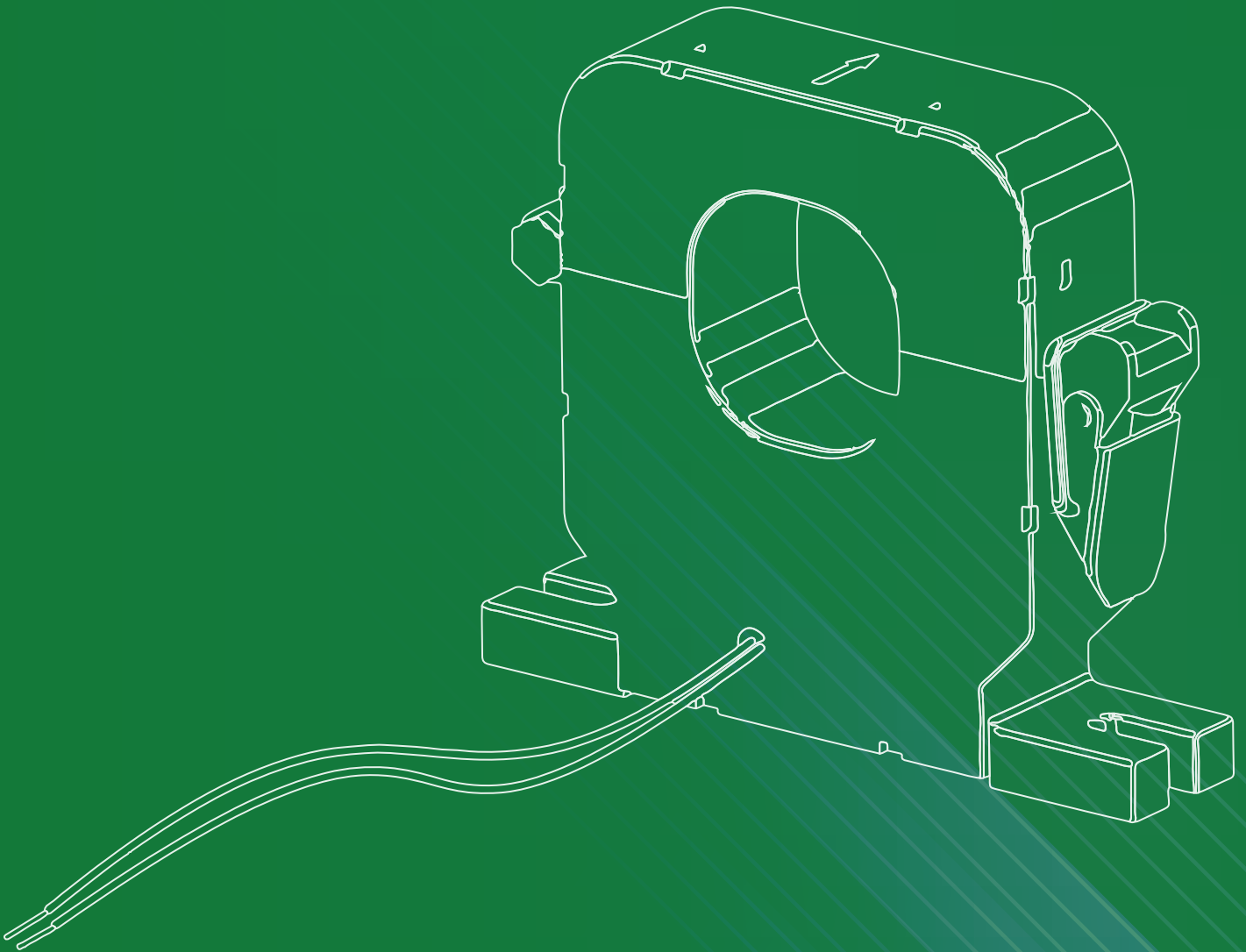
Electrical Sensing solution for a connected world

Electrohms Private Limited

No. 67/6-1, Industrial Suburb, Yeswanthpur, Bengaluru 560 022. INDIA

Telephone: +91 80 43492200, 43492211 to 17 • Fax: +91 80 23571852

✉ Email : sales@electrohms.com



Note: We reserve the right to make technical changes or modify the contents of this document without prior notice. Electrohms does not accept any responsibility whatsoever for potential errors or possible lack of information in this document.

We reserve all rights in this document and in the subject matter and illustrations contained therein. Any repro, disclosure to third parties or utilization of its contents – in whole or in parts – is forbidden without prior written consent with Electrohms.